

# Day trip suggestions

## ‘Romantic-EcoLodges-en-Provence\*\*\*\*’

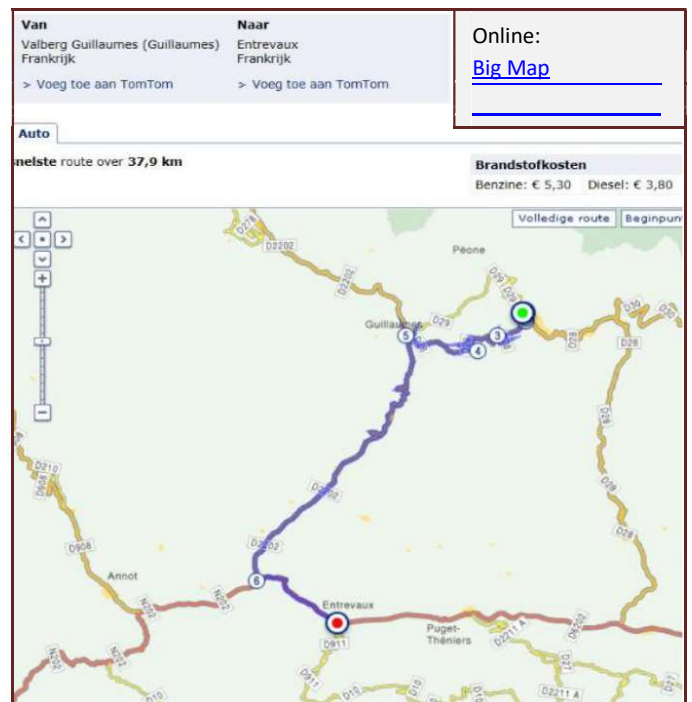
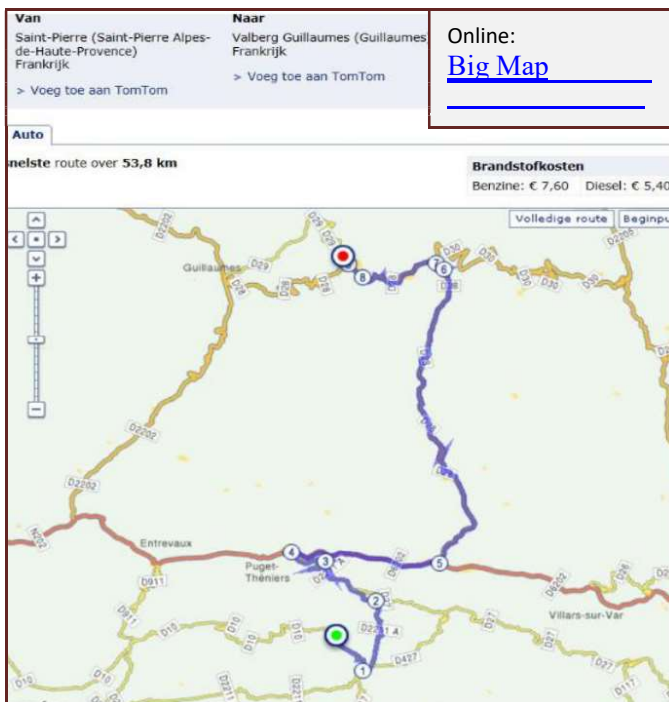
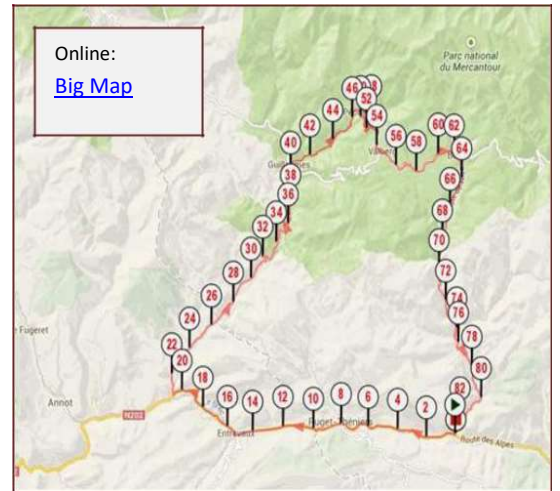
(Hiking, Biking & Driving the Area)

Although the Provence has an abundance of nice routes and villages (do not forget to visit Entrevaux!  
<https://www.entrevaux.info/>) here are four nice suggestions for you:

### 1 - GORGES DU CIAN & DU DALUIS (car ride – full day tour)

Recommendable beautiful car ride from La Lauve to Puget-Theniers, to Pont du Cians/Touët-sur-Var, to Beuil to Valberg through one of the most beautiful canyons of Europe  
<https://www.dangerousroads.org/europe/france/310-gorge-du-cian-france.html> Drive back through the equally overwhelming canyons of Gorges du Daluis (Valberg to Guillaume to Entrevaux to Puget-Theniers to La Lauve)  
<https://www.beyond.fr/villages/index.html>

While driving the “Gorge du Cian” and “Gorges du Daluis” do not forget to stop at some of the nice outlook points, and perhaps combine the car trip with a hike through the Alps around Valberg:  
<https://www.valberg.com>



Here are 2 links to get an impression: Gorges-du-Daluis: <https://www.youtube.com/watch?v=7iHE7M7UnWo&> &  
 Valberg-Gorges du Cians-2011: <https://www.youtube.com/watch?v=wLuKVurQIYE>

## 2 - AIGLUN (car ride - 2 hours)

Drive via Sigale through the wonderful Esteron Valley and visit Aiglun, where you can have a pleasant meal at the restaurant: <https://www.auberge-aiglun.fr>. If you drive through the village you will see from a bridge a narrow beautiful canyon with the river finding its way between the rocks.

## 3 - BEHIND PUGET-THENIERS (car ride - 6 hours)

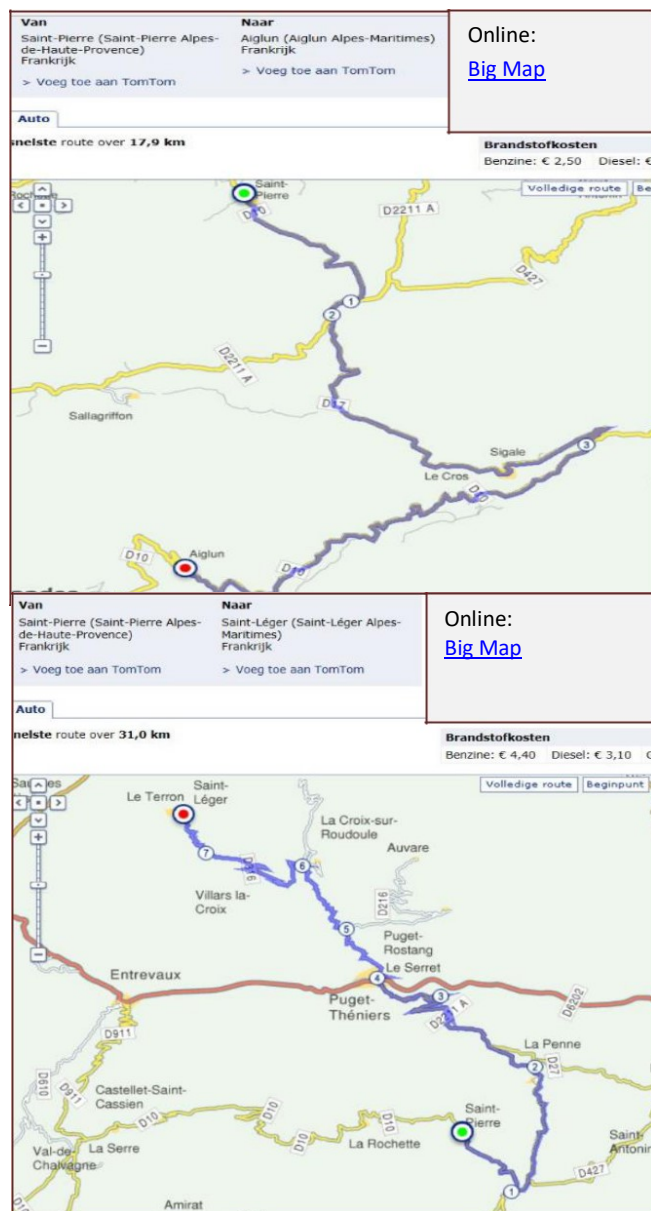
Drive through Puget-Theniers and drive through the “Gorges de la Roudoule” to the place called: Saint Leger <https://www.stleger.info/bienvenue.htm>. Here you can have a pleasant meal.



On your way to Saint Leger you will find a parking place with some nice circular walks (the shortest walk takes 1,5 hour, the longest one takes 3,5 hours). You may want to visit the Eco Museum in Puget-Rostang, a beautiful mountain village. <https://www.france-voyage.com/communes/puget-rostang-23189/ecomusee-pays-roudoule-puget-rostang-4550.htm>.

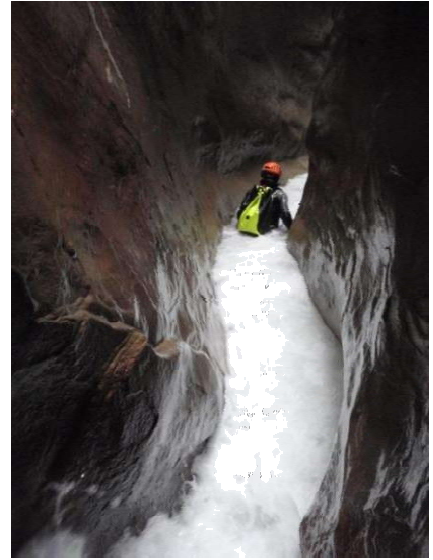
Here you can learn about one of Europe’s last, and still functional, seasonal movement of livestock and people: <https://en.wikipedia.org/wiki/Transhumance>.

**All of the above routes can easily be found, tracked and downloaded on mobile devices and linked to your navigation system. Of course there are plenty apps and pages that help finding your way in this area. Here are 2 useful links to the area: <https://www.routeyou.com/en-fr/location/view/47838758/french-prealps> & <http://www.provence-panorama.com/en>**



#### 4 - BEHIND CLUE DU RIOLAN (CANYONING - HALF DAY OR FULL DAY)

Only ten minutes from La Lauve you will find the Riolan in the Esteron Valley, which is without doubt one of Europe's most beautiful canyons, a real jewel. It's not a very difficult canyon, but it's a long, feature packed descent that requires you to be physically fit and athletic. You'll find jumps, slides, abseils and long sections of whitewater walking and swimming. The minimum age is 14-16 years. The guide lives in Saint-Pierre. See <https://www.canyon-cote-azur.com/we-speak-english/> and <https://www.canyon-cote-azur.com/canyon-journ%C3%A9e-full-day/canyon-riolan/>



#### 5 – Climbing Mont Pelat from Col de la Cayolle (hike – full day)

Mont Pelat (3,051 mtr) is the highest mountain of the Mercantour. From Col de la Cayolle (2,327 mtr) a relative easy and well-marked hiking trail leads you to Mont Pelat and back. Although it is not a very difficult trail, it's still a serious hike of approx. 20 km on which you definitely need hiking boots. But you will –for sure- see marmots and chamois!

Drive via Puget-Theniers and Entrevaux north to Daluis and Guillaumes to Col de la Cayolle on the

D2202. This drive takes up to 2 hours.

You can park your car at the Col. The hiking trail is very well marked. Mont Pelat lies west of the Col. It takes you up to 4 to 5 hours to the top of Mont Pelat, depending on your condition (2-4 hours back). But on top you'll have a majestic view!

Start this daytrip early in the morning.

#### 6 – Swimming in the Var

Driving to Puget, just before the bridge over the Var, turn to the right. Passing the campsite, drive for another 100 meters and find a nice spot beside the river.



Our staff can advise you on more things to do and thing to know.  
Feel free to contact us while you're enjoying your holiday, we are here to help!  
**Our staff at location: +33 687092849**